

Table of Contents

August 22, 2022		August 23, 2022	
PUPS	Schedule and planner	PUPS	Clubs and extracurriculars
P1	Planners	R1	Dress code and student IDs
Enrichment	Lunch schedule and bathrooms	Enrichment	Lunch schedules and bathroom
P2	Grades and homework	R2	Absences, nurse, and who to ask for help
P3	Hallway behavior and tardies	R3	Lockers and cell phones
P4	Pick up, buses, arrival and breakfast	R4	Dismissal and buses

Welcome to Lanier Middle School!

You are in
your PUPS
class!

We are glad you are here!



Schedules

- You are receiving a pink copy of your schedule
- This is the schedule you should use today

Today is a **PURPLE** Day

Schedules

Exp	Trm	Crs-Sec	Course Name
S1(A-B)	21-22	ADM0115-41	ADVOCACY MS
P1(A)	21-22	SCI4061V-27	SCI 6 MYP/VG
P2(A)	21-22	MUS8436Y-4	CHOIR 1Y
P3(A)	21-22	PEU94350-1	BEG DANCE 6 Y
P4(A)	21-22	MTH2061V-16	MATH 6 MYP/VG
R1(B)	S1	ELC9041F-6	THNKNG SKLLS 6F
R1(B)	S2	ELC9041S-1	THNKNG SKLLS 6S
R2(B)	21-22	SST3061V-30	WC STDY6 MYP/VG
R3(B)	S1	SPN5701F-13	SPAN 6-BEG F
R3(B)	S2	SPN5701S-15	SPAN 6-BEG S
R4(B)	21-22	ELAR1061V-12	ELAR MYP VG GR6
EP(A-B)	S2	ADM91570-263	STUDY LAB 2

SAMPLE SCHEDULE

P(A)- Purple day

R(B)- Red day

Advocacy- PUPS/Study Lab

Study Lab 2- Enrichment

VG- Vanguard, is the academic pathway for students identified as Gifted and Talented. All students identified as G/T should have the VG code by all four **core** courses.

Some courses are listed twice because they are semester long courses (S1/S2), taken both

Bell Schedule

Breakfast	8:20-8:30 (in PUPS)		
PUPS (Advocacy)	8:30-9:10		
P1/R1	9:15-10:35		
Enrichment (Studylab 2)	10:40-11:15		
P2/R2	A Lunch 11:20-11:50 Lunch 11:55-1:10 P2/R2	B Lunch 11:20-11:55 P2/R2 12:00-12:30 Lunch 12:35-1:10 P2/R2	C Lunch 11:20-12:35 P2/R2 12:40-1:10 Lunch
P3/R3	1:15-2:35		
P4/R4	2:40-4:00		

Planners

- PRINT your first and last name on your planner with a permanent marker
- Bring it to every class everyday
- Replacements are available in Office B for \$5, until supplies run out



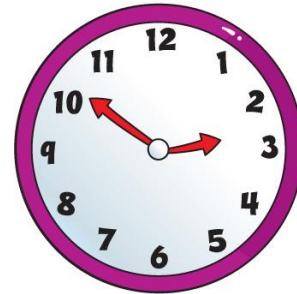
Planners

- Open to pg. 5 and write your schedule in your planner (use a pencil)
- Use the building map on pg. 6 to find your next class P1 and the rest of your classes for today



Hallway Behavior

- ◎ Reasonable volume (inside voice)
- ◎ Follow the directional signs for all hallways and stairwells
- ◎ 1st and 2nd floors go counterclockwise
- ◎ 3rd floor goes both directions
- ◎ Stairwells are one direction; check the signs



The background is white and decorated with various geometric shapes. In the top left, there is a large orange circle with a dashed red outline, partially overlapping a yellow circle. Below the yellow circle is a small pink circle. In the top right, there is a green circle with a white center, a small orange circle, and a yellow circle with a dashed green outline. In the bottom left, there is a large yellow circle, a small cyan circle, and a green circle with a dashed green outline. In the bottom right, there is a large cyan circle with a white center, a small cyan circle with a dashed blue outline, and a small cyan circle. In the center, there is a large dashed blue circle containing the text 'P1'.

P1

The background features several decorative elements: a large orange ring with a dashed red inner circle in the top left; a large yellow circle below it; a small pink circle to the right of the yellow one; a large light blue dashed circle in the upper center; a green circle with a white center in the top right; a small orange circle above a green circle with a dashed yellow border in the top right; a large teal ring in the bottom right; a small teal circle with a dashed blue border below the teal ring; a small green circle with a dashed green border in the bottom left; a large yellow-green circle below it; and a small cyan circle to the right of the yellow-green one.

Attendance Verification

Planners

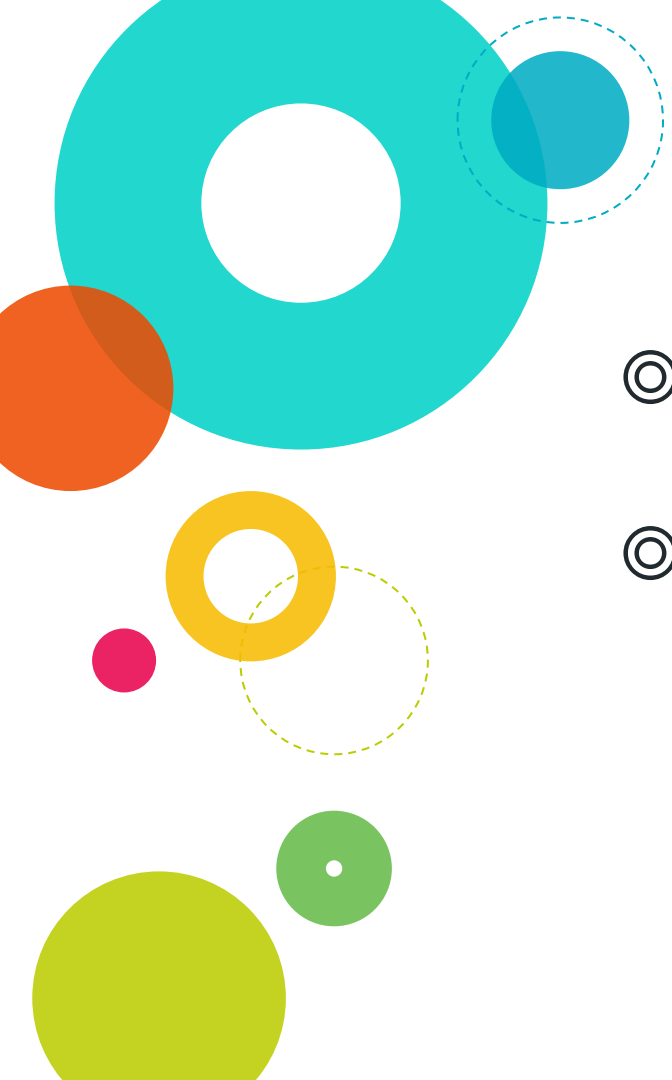
- ◎ You have received your planner from school
- ◎ How do I use it?
- ◎ What do I need it for?





Lanier Planners

- ◎ Your planner should be taken to every class.
- ◎ Copy agenda and homework assignments. If no assignments, write “none”.
- ◎ Utilize as a hall pass.
- ◎ Be sure your parents see your planner every night and initial every weekend indicating all pertinent school information for the week has been reviewed.

- 
- © Student Handbook can be found on pages 2 – 12.
 - © \$5.00 replacement fee for lost planners in Office B

The background is white and decorated with various geometric shapes. There are several solid circles in orange, yellow, green, and blue. Some of these circles have dashed outlines in the same or contrasting colors. A large, faint dashed circle is centered behind the text. The word "Enrichment" is written in a bold, blue, sans-serif font.

Enrichment



Bathrooms

- ⦿ Use restrooms during passing periods
- ⦿ 15/15 rule – you cannot use the restroom the first 15 minutes and the last 15 minutes of class
- ⦿ All students must report vandalism, excessive messes or damage to their teacher immediately



Bathroom Behavior

- ◎ Be clean -- clean up any messes
- ◎ Be quick -- no loitering in the restroom
- ◎ Be courteous -- let your teacher know if the restroom is missing supplies or needs attention



Lunch

- ◎ Three lunch periods (A, B, & C)
- ◎ Where can we eat?
 - Cafeteria
 - Chess Patio across from the cafeteria
 - South Patio at the end of the purple mile
- ◎ No eating in classrooms or hallway



Lunch

- ⦿ Hot food line will be open
- ⦿ Microwaves are not available
- ⦿ You choose your seat; it is first come first served
- ⦿ No saving seats
- ⦿ No food deliveries



Lunch

- ⦿ Arrive on time to lunch (cafeteria or patio)
- ⦿ Sit immediately unless you are getting food in the lunch line
- ⦿ Trash cans will come to you
- ⦿ No one should leave lunch areas without permission
- ⦿ Remain seated until the table is dismissed
- ⦿ All trash must be clear from your table before you are allowed to leave
- ⦿ Students should use the restroom before or after lunch



What Lunch Do I Have?

- ◎ Look at your schedule
- ◎ Your lunch depends on your P2 and R2 teacher
- ◎ You may have different lunches on Purple and Red days



Lunch Today!

Your lunch will be determined who you have for P2.

Everyone will go to your P2 class first today so you can learn your lunch period and your teacher will dismiss you to lunch.

The background is white and decorated with various geometric shapes. In the top left, there is a large orange ring with a dashed red circle inside it, and a yellow circle below it. A small pink circle is to the right of the yellow one. In the bottom left, there is a large green circle with a dashed green circle inside it, and a small cyan circle to its right. In the top right, there is a green circle with a white dot in the center, a small orange circle above it, and a yellow circle with a dashed yellow circle inside it. In the bottom right, there is a large cyan ring and a small cyan circle with a dashed cyan circle inside it. In the center, the text 'P2' is written in a bold, blue, sans-serif font, enclosed within a large, light blue dashed circle.

P2

Grades

- ◎ Open your planner to pg. 7
- ◎ Enter the Lanier Grading Policy in the boxes on pg. 8





Grades

<u>Categories</u>	<u>Percent</u>	<u>Description</u>
Homework	10%	Independent practice to be completed outside of class time
Quizzes	15%	Assessments that only cover part of a unit
Classwork	35%	An activity or task to be completed during class time
Projects / Tests	40%	Assessments that cover a whole unit



Late Work Policy

When assignment is turned in	Maximum grade
On time	100
One class after due date	80
Two classes after due date	70
Three classes after due date	50
More than 3 classes after due	No credit awarded



Library

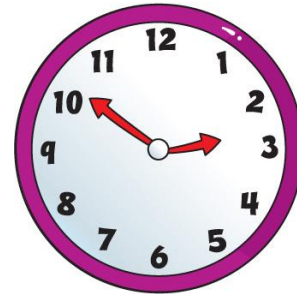
- ◎ The library is open this year.
- ◎ Listen for the announcements for library hours and when you can start checking out books.

The background is white and decorated with various geometric shapes. In the top left, there is a large orange ring with a dashed red circle inside it, and a yellow circle below it. A small pink circle is to the right of the yellow one. In the bottom left, there is a large green circle with a dashed green circle inside it, and a small cyan circle to its right. In the center, a large dashed light blue circle contains the text 'P3'. In the top right, there is a green circle with a white dot in the center, a small orange circle above it, and a yellow circle with a dashed yellow circle inside it. In the bottom right, there is a large cyan ring and a small cyan circle with a dashed cyan circle inside it.

P3

Hallway Behavior

- ◎ Reasonable volume (inside voice)
- ◎ Follow the directional signs for all hallways and stairwells
- ◎ 1st and 2nd floors go counterclockwise
- ◎ 3rd floor goes both directions
- ◎ Stairwells are one direction; check the signs





Hallway Behavior

- ◎ Running & horseplay prohibited
- ◎ Hall Pass needed during instructional time (in your planner)
- ◎ No students in hallway during first and last 15 minutes of class
- ◎ No loitering in hallways or lockers during passing periods



Tardies

- ◎ Tardies are counted each period and appropriate consequences will be assigned based on the number of tardies.
- ◎ Students are considered tardy if they are not inside their assigned classroom when the bell rings.
- ◎ Tardy students will be received by the teacher and marked tardy.
- ◎ Classroom doors will be closed when the tardy bell rings.
- ◎ Lunch students are expected to be in the lunch areas when the tardy bell rings.

The background is white and decorated with various geometric shapes. In the top left, there is a large orange ring with a dashed red circle inside it, and a yellow circle below it. A small pink circle is to the right of the yellow one. In the bottom left, there is a large green circle with a dashed green circle inside it, and a small cyan circle to its right. In the top right, there is a green circle with a white dot in the center, a small orange circle above it, and a yellow circle with a dashed yellow circle inside it. In the bottom right, there is a large cyan ring and a small cyan circle with a dashed cyan circle inside it. In the center, the text 'P4' is displayed in a bold, blue, sans-serif font, enclosed within a large, dashed light blue circle.

P4



Entering the Building

- ◎ Once you arrive on campus, you must stay on campus until 4pm
- ◎ Walkers must use crosswalks
- ◎ Car riders can not be dropped off in the teacher parking lots
- ◎ Students can enter the building at 7:45am
 - ◎ Bus riders report to cafeteria
 - ◎ All others report to auditorium



Entering the Building

- ◉ Finish your outside food and drinks before entering the auditorium or wait to eat your breakfast in PUPS. No outside drinks can be brought to class other than water. Starbucks or breakfast drinks are not allowed in the building.
- ◉ After exiting the auditorium, pick up breakfast on your way to PUPS



Entering the Building

- ◎ Students will be dismissed from the auditorium or cafeteria to classrooms at 8:20 am
- ◎ If you get dropped off at Lanier in the morning, you can not leave campus and go to Starbucks
- ◎ Put your backpack and powered-off cell phone in your locker
- ◎ Breakfast 8:20-8:30 am in PUPS
- ◎ Tardy bell at 8:30



When and where do I get breakfast?

- ◎ First floor--by auditorium
- ◎ Second floor--by elevator
- ◎ Third floor--by elevator
- ◎ After exiting the auditorium, take your breakfast to your PUPS class by 8:30



Late Arrivals

After 8:30 am, walkers and car riders enter only at front entrance

- ◎ Report to attendance office (on left)
- ◎ Sign in on the “Tardy Log”
- ◎ Receive tardy pass to give to teacher
- ◎ Bus riders will get a pass by the cafeteria

Dismissal Procedures

- © 4:00 pm dismissal for all
- © Car riders / walkers - exit front of the building
- © Walkers must walk home immediately after dismissal
- © Car riders must remain in the red brick area while on campus
- © All students must be seated on a bench at 4:10 pm if you are waiting for a ride

Dismissal Procedures

- ◎ Bus riders – report to cafeteria
- ◎ Look at the board for your bus number
- ◎ If your bus is not here, wait in the cafeteria
- ◎ Make sure to be on time; your bus will leave immediately at 4:05 pm

Dismissal Procedures

- © Once you leave the campus, you may NOT return
- © Example: If you go to Raising Cane's, you may not return to campus
- © Athletics, Clubs, etc.— Report to designated area or sponsor's room immediately



PUPS



Today is a **RED** Day!





Get Involved!

Previous Clubs at Lanier

- ◎ 6th Grade Debate
- ◎ Anime Club
- ◎ Dungeons and Dragons Club
- ◎ Gay Straight Alliance
- ◎ History Club
- ◎ International Club
- ◎ Game Design Club
- ◎ Gardening Club
- ◎ Math Club
- ◎ Model United Nations Club
- ◎ Smash Bro Gaming Club
- ◎ Strength & Conditioning
- ◎ Student Council
- ◎ UIL Academics (all subjects)
- ◎ Wings of Fire Club
- ◎ Writing Club



Get Involved! Clubs at Lanier

- © Didn't see a club for you? Start your own!
- © If you are interested in starting a club, find a teacher sponsor. Then talk to Mr. Maluski in Office C to get your club approved.

Arts at Lanier

- ◎ Orchestra
 - ◎ Pops Club
- ◎ Band
 - ◎ Polka Band
 - ◎ Mariachi Band
 - ◎ Klezmer Band
 - ◎ Jazz Band
- ◎ Visual Arts
 - ◎ Art Club
 - ◎ Yearbook



A decorative graphic featuring various colored circles and rings. In the top left, there are overlapping pink, orange, and blue circles, with a dashed pink circle around the pink one. A large blue ring is positioned below the orange circle. In the top right, there are green, blue, and yellow circles, with a dashed yellow circle around a small yellow one. On the left side, there is a large green ring and a small blue circle. At the bottom left, there is a large green circle and a small orange ring. The background is white.

Why is it important for you to get involved?

- ◎ Make friends
- ◎ Become a strong member of the Lanier family
- ◎ Meet students who have similar interest
- ◎ Learn new things
- ◎ Share knowledge you already have
- ◎ Make a difference in the world
- ◎ Build your educational resumé



Athletics

CLUB (6TH, 7TH, & 8TH)

- ◎ Softball
- ◎ Baseball
- ◎ Tennis
- ◎ Wrestling

UIL (7TH & 8TH ONLY)

- ◎ Cross Country
- ◎ Football
- ◎ Volleyball
- ◎ Basketball
- ◎ Swimming
- ◎ Track and Field
- ◎ Soccer
- ◎ Cheerleading



Fire Drill

- ⦿ Stop what you are doing and leave all of your belongings
- ⦿ Exit the building **silently** with your class
- ⦿ Stand with your class **silently** and in a straight line in designated area listed on map
- ⦿ Teachers will hold “All Clear” signs
- ⦿ When the bell rings 2x, re-enter the building **silently**

The background is white and decorated with various geometric shapes. In the top left, there is a large orange ring with a dashed red circle inside it, and a yellow circle below it. A small pink circle is to the right of the yellow one. In the bottom left, there is a large green circle with a dashed green circle inside it, and a small cyan circle to its right. In the top right, there is a green circle with a white dot in the center, a small orange circle above it, and a yellow circle with a dashed yellow circle inside it. In the bottom right, there is a large cyan ring and a small cyan circle with a dashed cyan circle inside it. In the center, the text 'R1' is displayed in a bold, blue, sans-serif font, enclosed within a large, light blue dashed circle.

R1



LMS Dress Code

- ◎ Khaki or navy pants, shorts, skirts
- ◎ Lanier polo shirts or Lanier spirit shirt



LMS Dress Code- Top

- ◎ Lanier polos
- ◎ Lanier spirit shirts M-F
- ◎ Lanier hoodies/jackets
 - ◎ Hoods must be down inside the building
- ◎ Solid-colored long-sleeves under Lanier gear



LMS Dress Code- Bottom

- ◎ Khaki or navy bottoms
- ◎ Jeans (blue, denim, no holes/rips) on Fridays (optional)
- ◎ Shorts / skirts no more than 3" above knee
- ◎ Leggings can be worn under skirts
- ◎ Pants must be appropriately-sized
- ◎ No sweatpants, jeggings, or joggers



Dress Code- Accessories

- ⦿ Distracting headgear not permitted
- ⦿ No open-back or open-toe shoes
- ⦿ No high-heels, platforms, flip-flops, crocs, slides, slippers, or sandals

2022-2023 UNIFORM POLICY

All students are required to wear the Lanier school uniform as defined in the following policy. All articles of the uniform are to be maintained and worn in a way that presents the individual student and the school in a positive manner. All articles of the uniform are to fit properly without cuts, rips, holes, or tears.

Top	Bottom
Shirts <ul style="list-style-type: none">• Polos & Lanier t-shirts must be purchased from the Lanier PTO store (also available online)• Students may wear a Lanier polo or Lanier spirit t-shirt only• Students may choose any color we offer; there are no grade level specific colors• Solid-colored long-sleeved shirts may be worn under school polos and spirit shirts• Shirts and sweatshirts may not be altered and/or personalized Jackets and Other Outerwear <ul style="list-style-type: none">• ONLY Lanier sweatshirts and Lanier jackets may be worn in the building• No hoods may be worn in the building• School ID must be visible at all times• Non-Lanier coats and jackets must be placed in the student's locker upon entering the building and remain in the student's locker throughout the entire instructional day Head Coverings <p>Hats, hairnets, bandanas, and any other headgear that is deemed to be a distraction to the learning environment are NOT permitted to be worn in the building</p>	Pants <ul style="list-style-type: none">• Navy or khaki uniform pants- fitted at waist (no sagging)• Denim jeans are permitted on Fridays- blue color only• Cargo pants, khaki jeggings/leggings, corduroy, spandex, stretch pants, and leather/pleather are NOT permitted Shorts and Skirts <ul style="list-style-type: none">• Navy or khaki uniform shorts, skorts, or skirts only• Shorts, skorts, and skirts must be no more than 3 inches above the top of the knee• Corduroy shorts, cargo shorts, stretch shorts, jean shorts, and athletic shorts are NOT permitted• Solid-colored leggings may be worn under skirts and shorts Footwear <ul style="list-style-type: none">• Closed-toed and closed-back shoes ONLY• Flip-flops, sandals, slides, crocs, platforms, or house shoes/slippers are not permitted



Need Uniforms?

- ◎ PTO has a school store
- ◎ Located up the half stairs close to cafeteria and Chess Patio
- ◎ Across from the dance studio room 132



Student ID Badges

- ⦿ Pictures will be taken within the first weeks of school
- ⦿ IDs must be worn around your neck while at school
- ⦿ Don't cover them with stickers or alter them in any way
- ⦿ Needed for
 - ⦿ Lunch
 - ⦿ Library
 - ⦿ Tardies
- ⦿ Keep you ID in your locker at the end of the day



Dress Code

What if I get “dress-coded”?

- ⦿ Sent to Office B
- ⦿ Parents are called to bring appropriate clothes

What happens if I lose my ID?

- ⦿ Available for purchase in Office B
- ⦿ Cost is \$5

The background is white and decorated with various geometric shapes. There are several solid circles in orange, yellow, green, and blue. Some of these circles have dashed outlines in the same or contrasting colors. A large, faint dashed circle is centered behind the text. The word "Enrichment" is written in a bold, blue, sans-serif font.

Enrichment



Bathrooms

- ⦿ Use restrooms during passing periods
- ⦿ 15/15 rule – you cannot use the restroom the first 15 minutes and the last 15 minutes of class
- ⦿ All students must report vandalism, excessive messes or damage to their teacher immediately



Bathroom Behavior

- ◎ Be clean -- clean up any messes
- ◎ Be quick -- no loitering in the restroom
- ◎ Be courteous -- let your teacher know if the restroom is missing supplies or needs attention



Lunch

- ◎ Three lunch periods (A, B, & C)
- ◎ Where can we eat?
 - Cafeteria
 - Chess Patio across from the cafeteria
 - South Patio at the end of the purple mile
- ◎ No eating in classrooms or hallway except water



Lunch

- ⦿ Hot food line will be open
- ⦿ Microwaves are not available
- ⦿ You choose your seat, it is first come first serve
- ⦿ No saving seats
- ⦿ No food deliveries



Lunch

- ⦿ Arrive on time to lunch (cafeteria or patio)
- ⦿ Sit immediately unless you are getting food in the lunch line
- ⦿ Trash cans will come to you
- ⦿ No one should leave the lunch areas without permission
- ⦿ Remain seated until the table is dismissed
- ⦿ All trash must be clear from your table before you are allowed to leave
- ⦿ Students should use the restroom before or after lunch



What Lunch Do I Have?

- ◎ Look at your schedule
- ◎ Your lunch depends on your P2 and R2 teacher
- ◎ You may have different lunches on Purple and Red days



Lunch Today!

Your lunch will be determined who you have for R2.

Everyone will go to your R2 class first today so you can learn your lunch period and your teacher will dismiss you to lunch.

The background is white and decorated with various geometric shapes. In the top-left, there is a large orange ring with a dashed red circle inside it, and a yellow circle below it. A small pink circle is to the right of the yellow one. In the bottom-left, there is a large lime green circle, a small cyan circle to its right, and a small green circle with a dashed green border above it. In the top-right, there is a green circle with a white dot in the center, a small orange circle above it, and a lime green circle with a dashed yellow border below it. In the bottom-right, there is a large cyan ring and a cyan circle with a dashed blue border above it. In the center, the text 'R2' is displayed in a bold, blue, sans-serif font, enclosed within a large, light blue dashed circle.

R2



What if I am absent?

- ◎ Check Canvas for missed assignments and communicate with your teachers
- ◎ Provide a written or emailed excuse within 3 days to attendance office
- ◎ No extracurricular activities on days when you are absent
- ◎ Can not miss more than 10% of class for high school credit courses



What if I have an appointment?

- ◎ If you return to school after 10:15 am, provide a doctor's note to attendance office



What if I feel sick while I'm at school?

- ◎ Ask your teacher for a pass to see the nurse

Don't just stop by between classes; get a pass
- ◎ **Students are NOT allowed to text or call home to be picked up**
- ◎ The nurse can only give you medicine supplied by parents/guardians

MEDICATIONS AT SCHOOL

What you need to know!



MEDICATIONS AT SCHOOL

- ALL medications, over-the-counter & prescription must have a doctor's order on file with the nurse & have a pharmacy label with the student's name attached to the original container - no loose pills in a baggie.
- *Medications must not be expired.

CAN STUDENTS CARRY THEIR OWN MEDICATIONS?

- NO student may carry any type of medications - prescription or over-the-counter - without a *Self-Carry form signed by a doctor on file with the nurse. This is a Level III violation of the student conduct code.

*Self-carry orders are only for inhalers & EpiPens only.





What if I need to call home?

- ◎ Ask for a hall pass from your teacher
- ◎ You may use the phone in Office A or B
- ◎ **Students are NOT allowed to text or call on their cell phones**

Principal - Mr. Williams



- © Mr. Williams has been a Purple PUP since 2018
- © He loves talking about everything sports

6th Grade Administrators



Alleyne, Nicolette W

Principal, Asst Middle Sch 12M
Lanier Middle School

Ms. Alleyne

6th Grade (A – L) – Schedules, Discipline & ARDs



Ms. Cummings

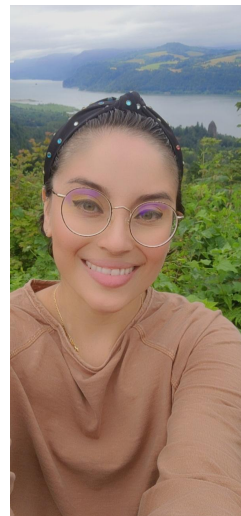
6th Grade (M – Z) – Schedules, Discipline & ARDs

7th Grade Administrators



Ms. Garza Pender

7th Grade (A – L) – Schedules, Discipline & ARDs



Ms. Zapata

7th Grade (M – Z) – Schedules, Discipline & ARDs

8th Grade Administrators



Mr. Cooper
8th Grade (A – L) – Schedules, Discipline & ARDs



Ms. Miller
8th Grade (M – Z) – Schedules, Discipline & ARDs



Mr. Maluski (8th)



Mr. Uzoma (6th)



Ms. Regev (7th)

What if I need someone to talk to?

- © Contact our social workers if you are feeling stressed, unorganized, overwhelmed, or anxious
- © In Office C, on the second floor

The background is white and decorated with various geometric shapes. In the top left, there is a large orange ring with a dashed red circle inside it, and a yellow circle below it. A small pink circle is to the right of the yellow one. In the bottom left, there is a large green circle with a dashed green circle inside it, and a small cyan circle to its right. In the top right, there is a green circle with a white dot in the center, a small orange circle above it, and a yellow circle with a dashed yellow circle inside it. In the bottom right, there is a large cyan ring and a small cyan circle with a dashed cyan circle inside it. In the center, the text 'R3' is displayed in a bold, blue, sans-serif font, enclosed within a large, light blue dashed circle.

R3



Lockers

- ◎ Lockers will be issued during PUPS this week
- ◎ Students are permitted to access lockers during designated times
- ◎ Students MAY NOT share lockers
- ◎ Do NOT give anyone your locker combination
- ◎ Do NOT leave food overnight
- ◎ Bring your lunch to 2nd period



Locker Times

- 8:20 - 8:30 am before PUPS
- 11:15 - 11:20 am before 2nd period (get your lunch)
- 1:10 - 1:15 pm before 3rd period
- 4:00 - 4:10 pm after school

Add these times to your planner on pg.4



Cell Phones at School

- ⦿ Unauthorized use of cell phones / headphones / earbuds / smart watches during the school day is subject to confiscation
- ⦿ Keep them powered down
- ⦿ Put them away in your locker



What if my cell phone gets taken up?

- ⦿ Go to Office B after 4pm
- ⦿ Parent must pay \$15 fee through SchoolPay
- ⦿ School is not responsible for theft/loss/damage

The background is white and decorated with various geometric shapes. In the top left, there is a large orange ring with a dashed red circle inside it, and a yellow circle below it. A small pink circle is to the right of the yellow one. In the bottom left, there is a large green circle with a dashed green circle inside it, and a small cyan circle to its right. In the top right, there is a green circle with a white dot in the center, a small orange circle above it, and a yellow circle with a dashed yellow circle inside it. In the bottom right, there is a large cyan ring and a small cyan circle with a dashed cyan circle inside it. In the center, the text 'R4' is displayed in a bold, blue, sans-serif font, enclosed within a large, dashed light blue circle.

R4

Dismissal Procedures


- © 4:00 pm dismissal for all
- © Car Riders/Walkers - Exit Front of the Building
- © Walkers must walk home immediately after dismissal
- © Car riders must remain in the red brick area while on campus
- © All students must be seated on a bench at 4:10 pm if you are waiting for a ride

Dismissal Procedures

- ◎ Bus Riders – Report to cafeteria
- ◎ Look at the board for your bus number
- ◎ If your bus is not here, wait in the cafeteria
- ◎ Make sure to be on time your bus will leave immediately at 4:05 pm

Dismissal Procedures

- © Once you leave the campus, you may NOT return
- © Example: If you go to Raising Cane's, you may not return to campus
- © Athletics, Clubs, etc.— Report to designated area or sponsor's room

A decorative graphic featuring a large, faint dashed circle that frames the central text. Various solid-colored circles in teal, lime green, orange, and pink are scattered around the perimeter. Some circles overlap, and there are also dashed circles of different colors (teal, green, yellow) interspersed among the solid ones.

We are going to
have a great
year at Lanier!